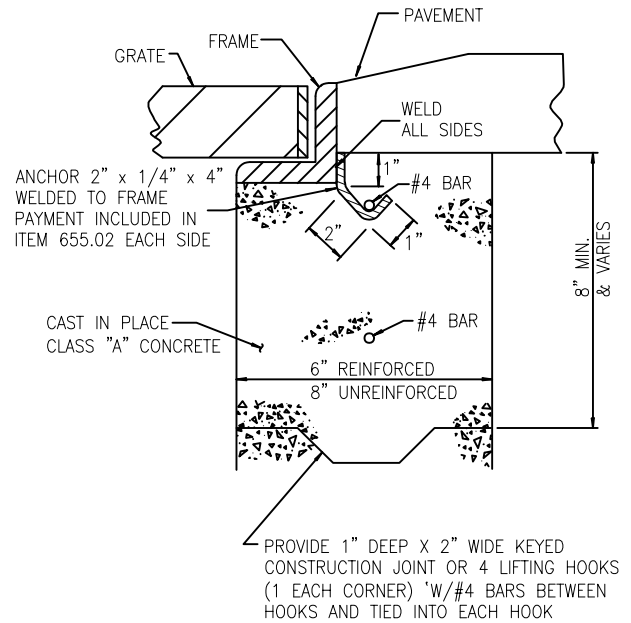
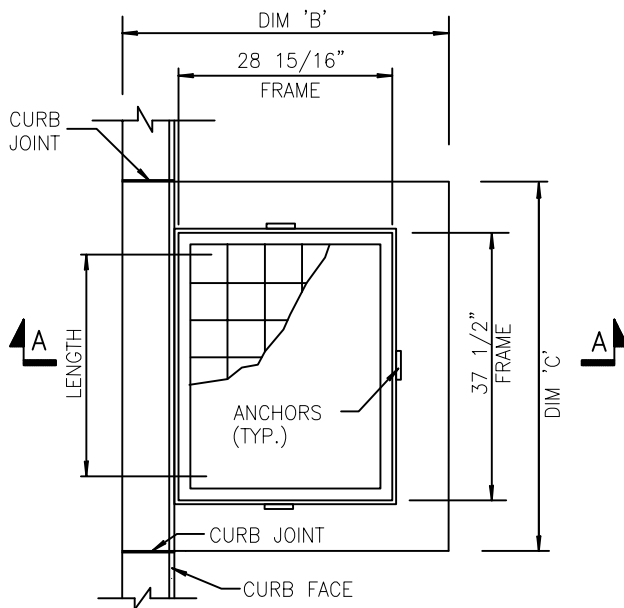


SECTION A-A
NOT TO SCALE.



DETAIL B FOR DROP INLET
NOT TO SCALE



PLAN
N.T.S.

NOTES:

1. ITEM 655.02 – FRAME AND GRATE #11
FRAME: 28 15/16" X 37 1/2"
GRATE: 27 11/16" X 36 1/2"
RECTANGULAR FRAME AND GRATE ASSEMBLY
REFER TO NYSDOT STANDARD SHEET 655-6
PAYMENT AREA = 7.2 sqft.
2. THE COST OF ALL BAR REINFORCEMENT SHALL BE INCLUDED IN THE BID PRICE FOR DROP INLETS. BAR REINFORCEMENT SHALL HAVE A COVER OF 2" UNLESS OTHERWISE SHOWN.
3. ALL CONCRETE FOR DROP INLETS SHALL BE CLASS 'A'.
4. FILL WITH CEMENT MORTAR AND SEAL WITH ASPHALT EMULSION TACK COAT BETWEEN FRAME AND CURB. PAYMENT SHALL BE INCLUDED IN THE APPROPRIATE CURB ITEM.
5. THE INTERIOR AND EXTERIOR OF ALL DROP INLETS SHALL BE COATED WITH TWO COATS OF KOPPERS SUPER SERVICE BLACK OR APPROVED EQUAL.
6. STEPS ARE REQUIRED FOR ANY STRUCTURE DEEPER THAN 4'-0" AND SHALL CONFORM TO MATERIAL SPECIFICATION 725-02. THE COST OF THE STEPS SHALL BE INCLUDED IN THE BID PRICE FOR DROP INLETS.
7. BASE AND WALL THICKNESS WILL BE 8" IF UNREINFORCED CAST-IN-PLACE.
8. CONCRETE SHALL NOT BE USED TO RESTORE PAVEMENT AROUND NEW OR ADJUSTED FRAMES AND COVERS. CONTRACTOR SHALL SAW-CUT A NEAT CLEAN LINE AROUND THE COVER, PLACE ASPHALT & SEAL SEAM WITH NYSDOT APPROVED CRACK FILL.

TYPE	ITEM NUMBER	WIDTH	LENGTH	DIM 'A'	DIM 'B'	DIM 'C'
C	604.50XXXX	36"	36"	30" MAX	48"	48"

DROP INLET TYPE 'C' (AGAINST CURB) PRECAST

NOT TO SCALE – REVISED: 06/12/23